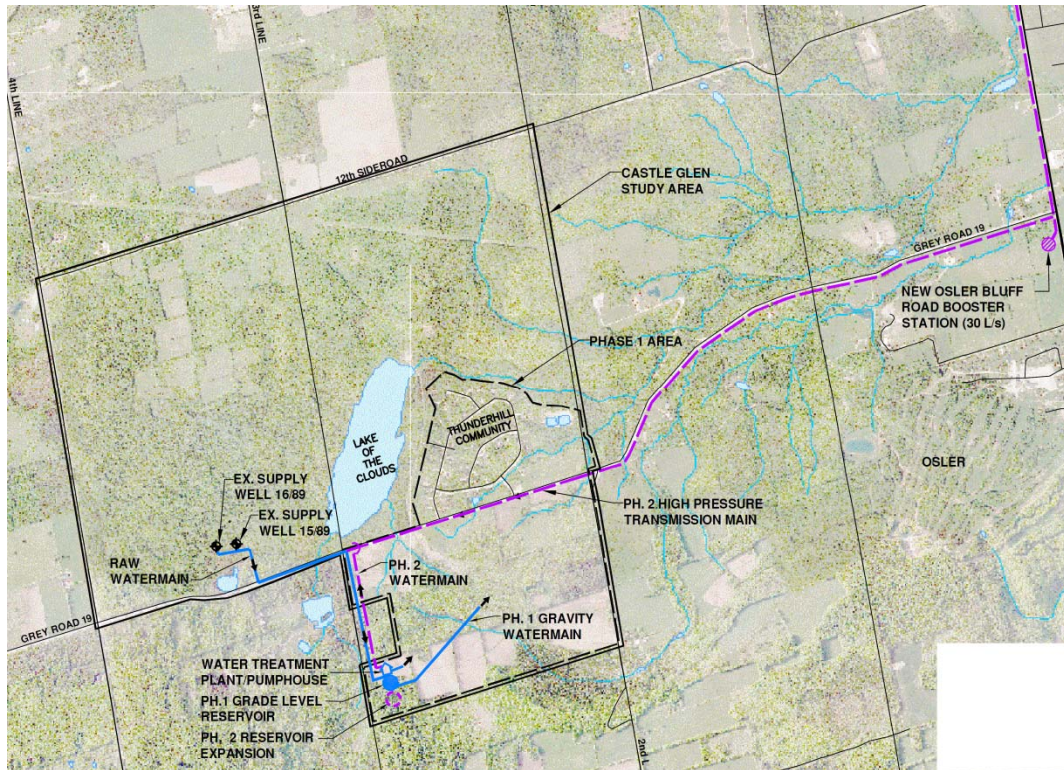


Castle Glen – Phases 3 & 4 Water Supply Class EA

Client: Castle Glen
Year: 2010 - 2011



SERVICES PROVIDED

CCTA completed Phases 3 and 4 of the Municipal Class EA for the water supply for Phase 1 of the Castle Glen development on the Niagara Escarpment in the Town of The Blue Mountains. The first phase of the development consists of 500 residential units. During the Class EA study, short-term and long-term water supply solutions (local groundwater and/or Georgian Bay water), which had been considered during the Town's Master Plan Class EA study in 2006, were re-evaluated in detail. Two sites for the local water pump house and reservoir, and two water storage options (elevated tank vs. grade-level reservoir), were thoroughly evaluated. The assessment considered carefully the potential impacts on the existing environmental conditions (local hydrogeology, vegetation, aquatic and terrestrial habitat) and the significance of the area as headwaters of Silver Creek and Black Ash Creek. The 50-year life cycle costs of all alternatives were estimated to adequately account for long-term energy and operating costs. The Class EA study was completed in December 2011.

Key Staff: Suzanne Troxler, Deanna Forrester, Dan Hurley



C.C. Tatham & Associates Ltd.
Consulting Engineers

Collingwood Bracebridge Orillia Barrie

email: info@cctatham.com
web: www.cctatham.com