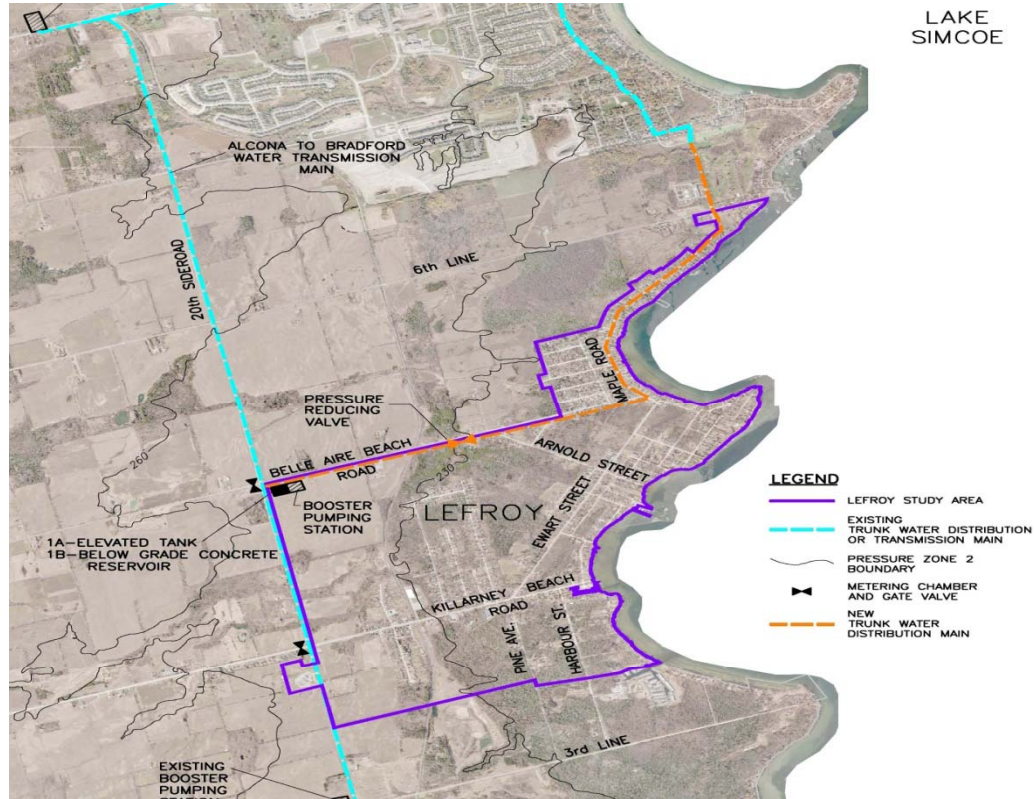


Lefroy Reservoir & Booster Pumping Station Class EA

Client: Town of Innisfil

Year: 2009 2010



SERVICES PROVIDED

CCTA completed a study as a Schedule B undertaking in the Class EA for the provision of a new water reservoir and booster pumping station in Lefroy. A new reservoir is needed to supplement the existing Alcona reservoir and meet the needs of the lakeshore communities. The proposed system will supply water to the Zone 2 pressure zone, and provide emergency water to pressure Zone 1. It will be fed from the Lakeshore water distribution system and from the Alcona to Bradford water transmission main. During the Class EA planning process the hydraulic model of the Lakeshore water distribution system was updated. Alternative locations and types of storage facilities were evaluated against a comprehensive list of criteria that included operational considerations, socio-economic factors, expandability and life-cycle costs. At the public open house in January 2010, the public supported the recommended location and type of storage.

Key Staff: Rex Meadley, Suzanne Troxler, Deanna Forrester



C.C. Tatham & Associates Ltd.
Consulting Engineers

Collingwood Bracebridge Orillia Barrie

email: info@cctatham.com
web: www.cctatham.com