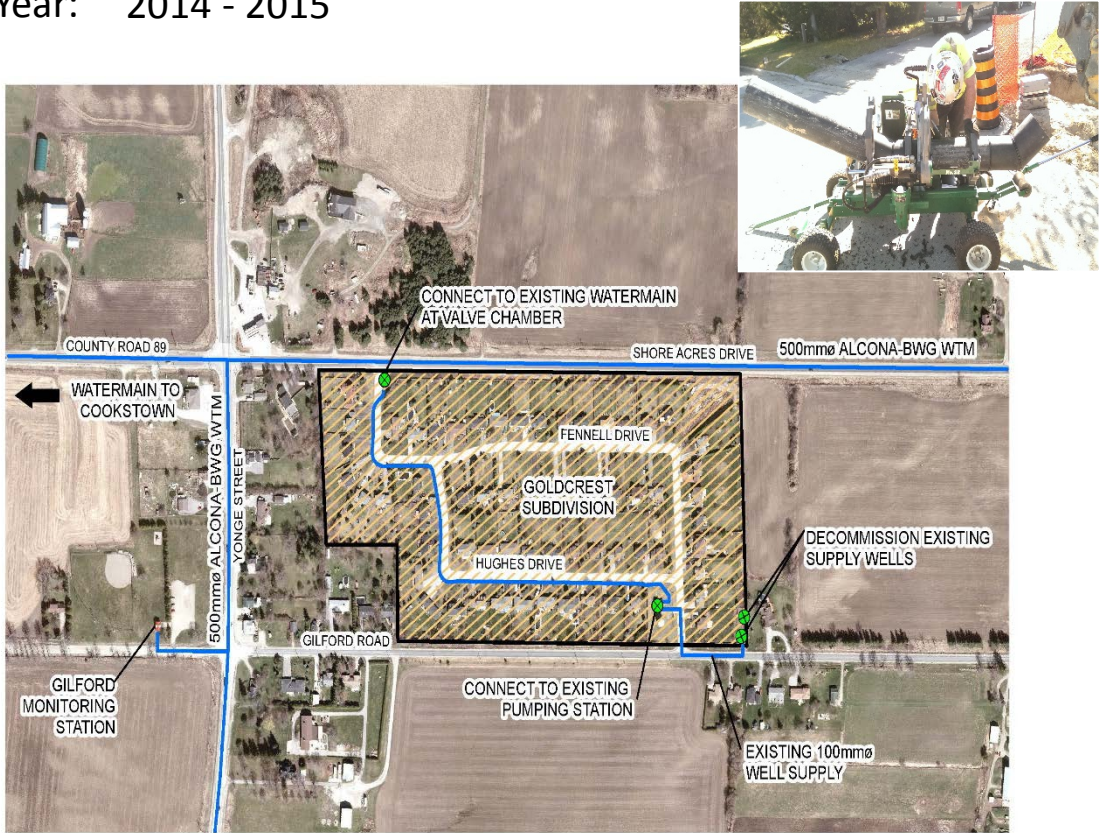


Goldcrest Water Supply

Client: Town of Innisfil

Year: 2014 - 2015



SERVICES PROVIDED

This project involved the installation of 600 m of 200 mm dia. HDPE watermain by horizontal directional drilling methods to supply an existing water reservoir and booster pumping station with municipally treated water to facilitate decommissioning of a well supply. Horizontal directional drilling methods were used to avoid impact to the exiting boulevard features in an established residential neighbourhood.

Key Staff: Bryan Stanton, Jonathan Webb, Mehrdad Shoostary



C.C. Tatham & Associates Ltd.
Consulting Engineers

Collingwood · Bracebridge · Orillia · Barrie · Ottawa

email: info@cctatham.com
web: www.cctatham.com