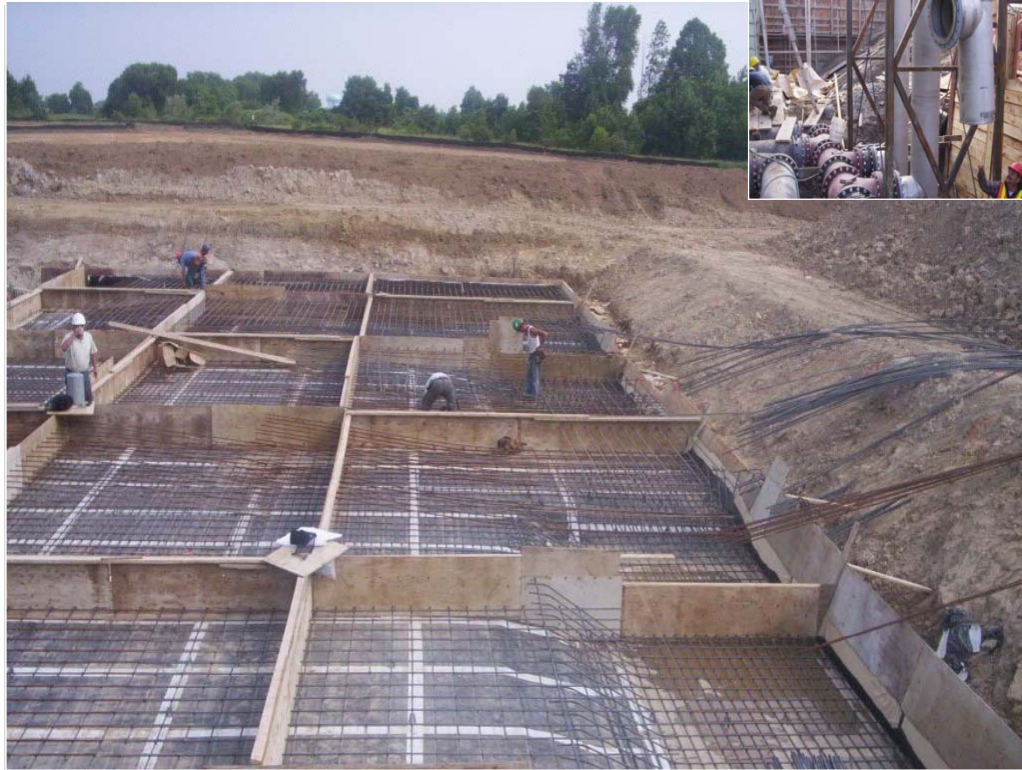


South Collingwood Reservoir & Pumphouse

Client: Town of Collingwood

Year: 2007 - 2008



SERVICES PROVIDED

Design of a two cell reinforced concrete below grade 2,565 m³ reservoir with attached pump house, commissioned in 2008.

Key Staff: Terry Smart, Mike Sanfilippo



C.C. Tatham & Associates Ltd.
Consulting Engineers

Collingwood

Bracebridge

Orillia

Barrie

email: info@cctatham.com
web: www.cctatham.com