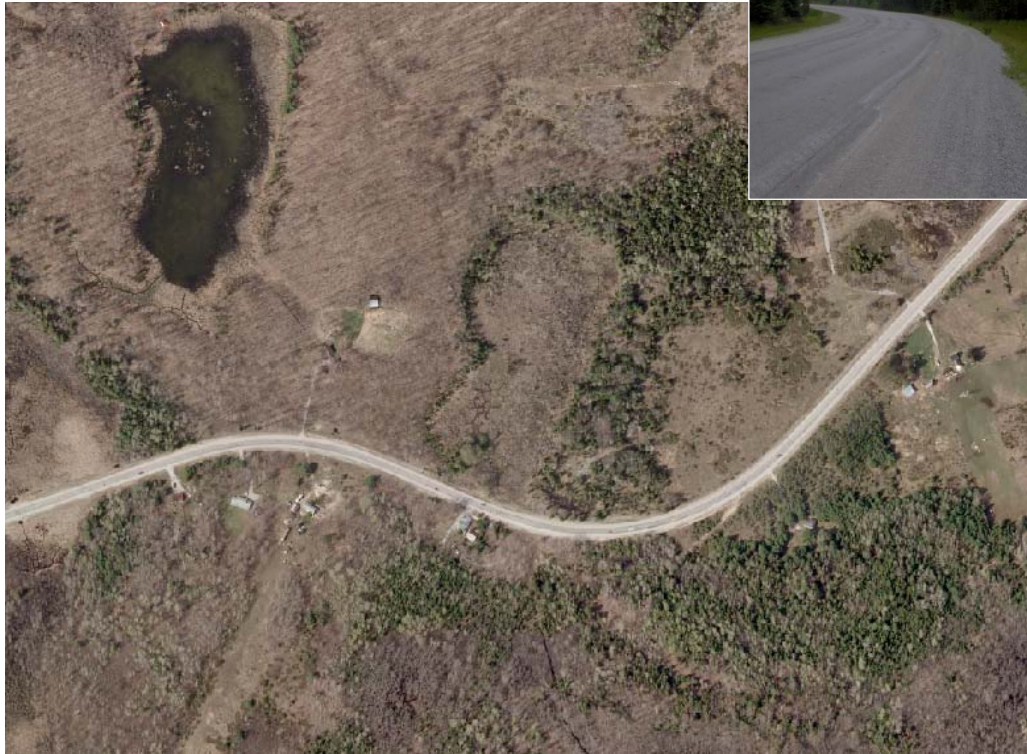


Simcoe Road 45 Environmental Assessment

Client: County of Simcoe

Year: 2009



SERVICES PROVIDED

The County of Simcoe retained CCTA to undertake a Schedule B Class Environmental Assessment Study to identify the most appropriate road improvement strategy for Simcoe Road 45. Improvements are necessary to address pavement deterioration, sub-standard horizontal geometry, limited sight lines and related safety issues. A number of road realignment options were identified to best accommodate improved road standards whilst minimizing impacts to adjacent landowners. Maximum superelevation for the new road surface was considered in the alternative solutions in order to reduce the radius of the subject curve. The scope of the project involved thorough discussion and coordination with local residents in order to minimize impacts to the extent possible. Following the completion of the Class EA Study, detailed design of the preferred solution will be completed with construction expected in 2010/11.

Key Staff: Michael Cullip, Shannon Roulston



C.C. Tatham & Associates Ltd.
Consulting Engineers

Collingwood Bracebridge Orillia Barrie

email: info@cctatham.com
web: www.cctatham.com