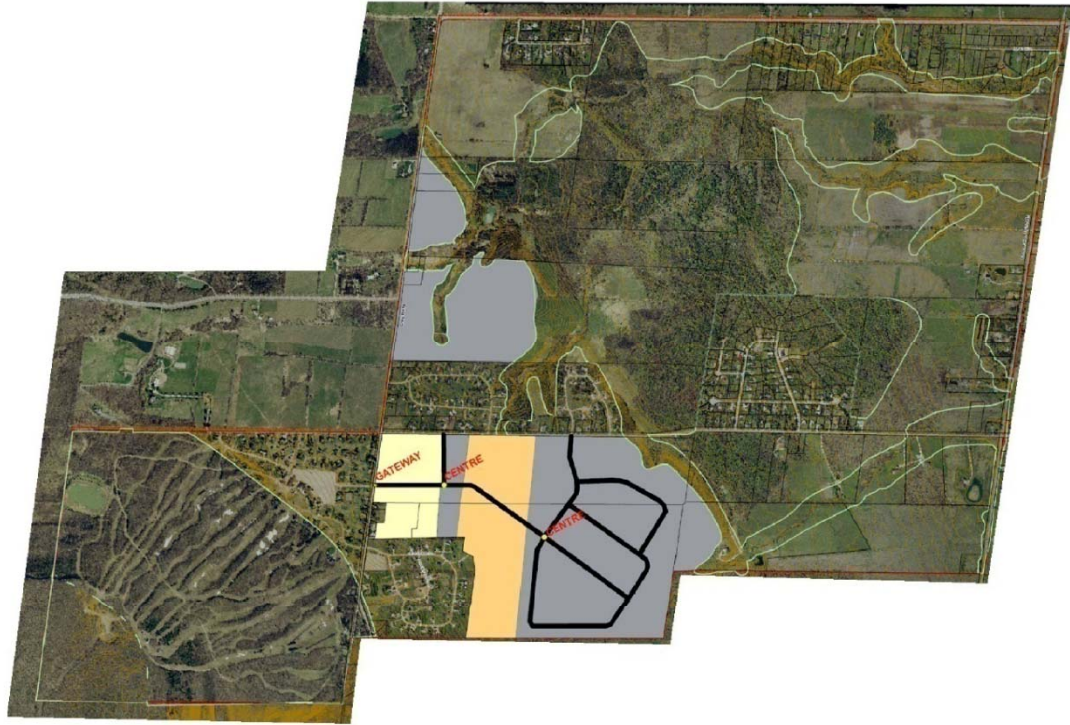


## Osler Bluff Secondary Plan Study

Client: Township of Clearview

Year: 2005-2006



### SERVICES PROVIDED

In 2005, CCTA undertook the Osler Bluff Secondary Plan Study to establish developable areas, development criteria and constraints, and framework for future land use in the 600 ha Osler Bluff Secondary Plan Area, a complex area bordering three different municipalities. Specifically, the work completed included:

- Detailed analysis of existing drainage and servicing conditions within the study area
- Development of criteria and constraints related to stormwater management (SWM), floodplain management and servicing
- Evaluation and recommendation of alternative SWM measures/approaches and servicing strategies considering the established criteria and constraints

The study produced clearly defined limits of development, development criteria and constraints, a recommended SWM approach and servicing strategy for the study area, and a framework for future land use to be implemented as the Secondary Plan Area is developed.

Key Staff: Dan Hurley, Daniel Twigger



**C.C. Tatham & Associates Ltd.**  
Consulting Engineers

Collingwood

Bracebridge

Orillia

Barrie

email: [info@cctatham.com](mailto:info@cctatham.com)  
web: [www.cctatham.com](http://www.cctatham.com)