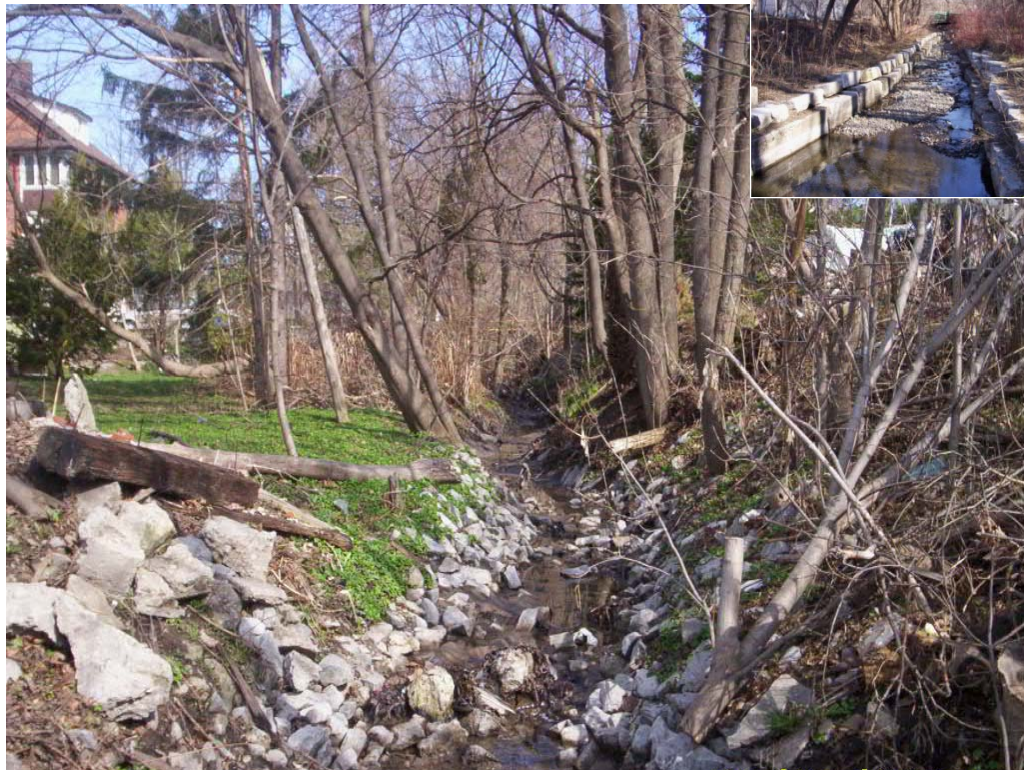


Sophia Creek Master Drainage Plan Class EA Update

Client: City of Barrie

Year: 2006 - 2007



SERVICES PROVIDED

In 2007 the City of Barrie retained CCTA to update the Master Drainage Plan Class EA for the Sophia Creek Watershed. Sophia Creek, an urban drainage system, is a combination of open channels and large trunk sewer which conveys surface water runoff through the City of Barrie's downtown core. The tasks completed included converting the existing SWMHYMO hydrologic model to PC-SWMM.net to reflect the current and future state of the watershed. Analyses included state-of-the-art modelling by creating a PCSWMM.net hydraulic model of the storm sewer network downstream of Peel Street that reflects the available design/as-built drawings and storm sewer geometrics gathered during field investigations and ground surveys. This detailed hydraulic analysis of the trunk storm system was combined with HEC-RAS to determine overland flow routes downstream of Peel Street. The corresponding limits of the Regulatory Floodline were established from the results. The product of the assignment provides an important tool for the City of Barrie in prioritizing channel and storm sewer infrastructure improvements.

Key Staff: Dan Hurley, Daniel Twigger, Amanda Kellett



C.C. Tatham & Associates Ltd.
Consulting Engineers

Collingwood Bracebridge Orillia Barrie

email: info@cctatham.com
web: www.cctatham.com