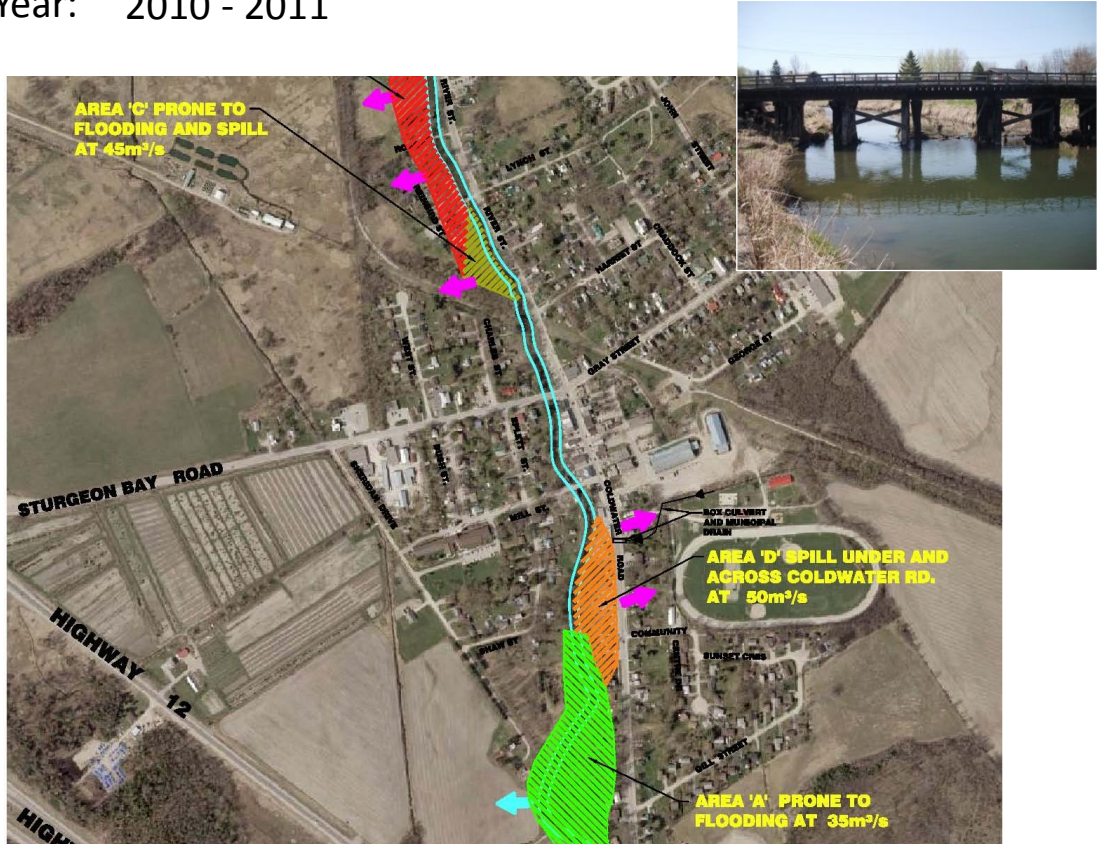


Coldwater Floodplain Analysis

Client: **Township of Severn**

Year: 2010 - 2011



SERVICES PROVIDED

CCTA was retained by the Township of Severn to conduct a floodplain study of the Coldwater River in the Village of Coldwater. The intent was to determine the cause and frequency of flood occurrences, and make recommendations to improve flood conveyance for the River reaches through the village. The study area consisted of approximately 1.9 km of channel including 7 bridges (3 public and 4 private). Regression analysis of Water Survey Canada flow data was used to establish return intervals for the 1:1 to 1:500 year river flow return periods. The HEC RAS hydraulic model was used to identify key areas causing flooding and identify constraints and opportunities. Recommendations were made to increase the conveyance capacity of the river from the 1:5 year to the 1:25 year return period. The potential for the construction of a bypass channel was also assessed to provide additional flood conveyance around the Village during less frequent storm events.

Key Staff: Jeremy Ash, Tim Collingwood, Dan Hurley



C.C. Tatham & Associates Ltd.
Consulting Engineers

Collingwood Bracebridge Orillia Barrie

email: info@cctatham.com
web: www.cctatham.com